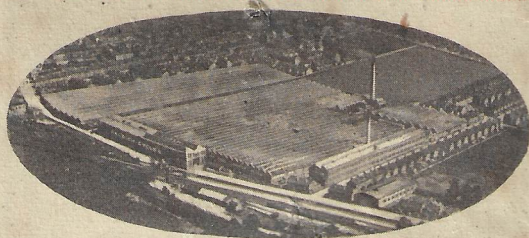




RALEIGH
THE ALL-STEEL BICYCLE



The Raleigh Cycle Co., Ltd

LENTON, NOTTINGHAM

Telegrams : " RALEIGH, NOTTINGHAM." Phone 4154 NOTTINGHAM

DEPOTS :

LONDON : 41 HOLBORN VIADUCT, E.C.1

Telegrams : " Morally, London."

ABERDEEN	345 Union Street
BELFAST	104 Ann Street
BIRMINGHAM	Paradise Street
BRADFORD	Royal Arcade, 45 & 47 Manningham Lane
BRISTOL	44 Queen's Road, Clifton
BRISTOL (Branch)	26 Old Market Street
DERBY	St. Peter's Street
DUBLIN	5 Leinster Street
EDINBURGH	75 Shandwick Place
GLASGOW	34 Queen Street
HANLEY	53 Piccadilly
HUDDERSFIELD	6 Trinity Street
LEEDS	58 Vicar Lane
LEICESTER	De Montfort House, London Road
LIVERPOOL	43-49 Berry Street
MANCHESTER	178, 180 Deansgate
NEWCASTLE-ON-TYNE	84 Northumberland Street
NORWICH	22 Prince of Wales Road
NOTTINGHAM	King Street
OXFORD	106 St. Aldate's
PLYMOUTH	99 Old Town Street
SHEFFIELD	21 The Moor
SOUTHSEA	62 Osborne Road
SWINDON	The Spot, 60 Regent Street



FOREWORD

THE wonderful increase in the popularity of the Raleigh, The All-Steel Bicycle is a great and convincing proof that the rider is the best judge. The Raleigh from the earliest days of cycling has never been the lowest priced machine and to-day there are many makes that are offered for sale at a less figure than the All-Steel Bicycle ; but the chief claim made for the Raleigh is that for value for every penny spent there is no cycle in the world to equal it.

In the making of a bicycle it is possible to put in or leave out literally hundreds of operations, and to the uninitiated the difference need not be apparent until the machine has actually been on the road. Herein lies the fundamental superiority of the Raleigh. Every extra operation, be it ever so small, adds its quota of goodness to the finished article and collectively they give the machine that high standard of quality that has characterized the Raleigh from its birth over 35 years ago.



RALEIGH
THE ALL-STEEL BICYCLE

The rider is the best judge. It is his money that is being spent, and he rightly has the final word. It is, therefore, a great compliment to British engineering that the number of Raleighs demanded by the public each year now exceeds **100,000** and satisfied riders are never tired of talking about their Raleigh mounts.

QUALITY TELLS

For the first cost of a Raleigh, is also the last, there are no repair bills to consider afterwards. It is guaranteed for ever and as a masterpiece of British engineering skill you will be justly proud of it.

A Raleigh rider not only feels a comfortable security in his machine, but has the satisfaction of knowing that no one he may meet on the road is better mounted or equipped for any condition of riding—be it speed, hill-climbing or town work.



**LIGHTWEIGHT
LADY'S**



SPECIFICATION

WHEELS	26in x 1 $\frac{1}{2}$ in.	PEDALS	3 $\frac{1}{2}$ in. rubber.
TYRES	Dunlop road racing on Roman aluminium rims. 26 x 1 $\frac{1}{2}$ in.	FITTINGS	Tools, toolbag and inflator complete.
FRAME	20in., 22in., 24in.	FINISH	Green enamel with 22ct. gold leaf lining or black finish without extra charge.
GEAR	60in. free wheel		Weight about 30lbs.
STEERING LOCK	Friction band.		
CHAIN COVER	Transparent.		
SADDLE	Brooks' B10.		

Sturmey-Archer 3-Speed Gear with H.B. Control 23/- extra.
Tricoaster with H.B. Control and front rim brake only, 29/- extra

PRICE £10 10 0

NET CASH or £1 0 0 deposit
and 12 monthly payments of 18/-

RALEIGH

THE ALL-STEEL BICYCLE



LADY'S
SPECIAL

SPECIFICATION

WHEELS 28in. x 1½in.
 PEDALS 3½in. rubber.
 FRAMES 22in. and 24in.
 SADDLE Brooks' B75 nickel
 STEERING LOCK Friction band
 CHAIN Hans Renold, ½in. roller
 TYRES Dunlop. 28 x 1½in.
 GEAR Sturmey-Archer
 3-speed.

GEAR Raleigh patent de-
 tachable oilbath.

FITTINGS Tools, toolbag and in-
 flator complete.

FINISH Black enamel with
 22ct. gold leaf and
 red lining.

Finish in Green enamel or All-black without extra charge.
 If supplied with tricoaster and front rim brake only, 6/- extra.

PRICE **£12 10 0** NET CASH or **£1 0 0** deposit
 and 12 monthly payments of **21/6**



RALEIGH

THE ALL-STEEL BICYCLE



GENT'S
SPECIAL

SPECIFICATION

WHEELS 28in. x 1½in.
 PEDALS 3½in. rubber.
 FRAMES 22in., 24in., 26in.
 SADDLE Brooks' B75 nickel
 STEERING LOCK Friction Band
 CHAIN Hans Renold, ½in.
 roller.
 TYRES Dunlop. 28 x 1½in.

GEAR Sturmey-Archer 3-speed.
 GEAR Raleigh patent de-
 tachable oilbath.

FITTINGS. Tools, toolbag and
 inflator complete.

FINISH. Black enamel with
 22ct. gold and red
 lining.

Finish in Green enamel or All-black without extra charge.
 If supplied with tricoaster and front rim brake only, 6/- extra.

PRICE **£12 10 0** NET CASH or **£1 0 0** deposit
 and 12 monthly payments of **21/6**

RALEIGH
THE ALL-STEEL BICYCLE



LADY'S
STANDARD

SPECIFICATION

WHEELS	28in. x 1½in.	GEAR	62in. free wheel.
PEDALS	3½in. rubber.	GEAR	Raleigh metal, open
FRAMES	22in. and 24in.	CASE	front.
SADDLE	Three-coil springs, nickel.	FITTINGS	Tools, toolbag and inflator complete.
STEERING	Lock Friction band.	FINISH	Black enamel, bronze and red lining.
TYRES	Dunlop. 28 x 1½in.		

All black finish without extra charge.

Sturmey-Archer 3-Speed Gear with H.B. Control 23/- extra.
Tricoaster with H.B. Control and front rim brake only, 29/- extra

PRICE £8 17 6 NET CASH or £1 0 0 deposit
and 12 monthly payments of 15/-

RALEIGH
THE ALL-STEEL BICYCLE



GENT'S
STANDARD

SPECIFICATION

WHEELS	28in. x 1½in.	GEAR	71in. free wheel.
PEDALS	3½in. rubber.	GEARCASE	Raleigh metal open front.
FRAMES	22in., 24in., 26in.	FITTINGS	Tools, toolbag and inflator complete.
SADDLE	Three-coil springs, nickel.	FINISH	Black enamel, bronze and red lining.
STEERING	Lock Friction band.		
TYRES	Dunlop. 28 x 1½in.		

All-black finish without extra charge.
Sturmey-Archer 3-Speed Gear with T.T. Control, 21/- extra.
Tricoaster with T.T. Control and front rim brake only, 27/- extra.
H.B. Control, 2/- extra.

PRICE £8 17 6 NET CASH or £1 0 0 deposit
and 12 monthly payments of 15/-

RALEIGH
THE ALL-STEEL BICYCLE



RALEIGH
THE ALL-STEEL BICYCLE



LADY'S
POPULAR



GENT'S
POPULAR

SPECIFICATION

WHEELS	28in. x 1½in.	GEAR	Raleigh metal (closed front).
PEDALS	3¼in. rubber.	CASE	
FRAMES	22in. and 24in.	FITTINGS	Tools, toolbag and inflator complete.
SADDLE	Three-coil springs, enamelled.	FINISH	Black enamel, artistically lined.
TYRES	Warwick. 28 x 1½in.		
GEAR	62in. free wheel.		

All-black finish without extra charge.

Sturmey-Archer 3-Speed Gear with H.B. Control 23/- extra.
Tricoaster with H.B. Control and front rim brake only, 29/- extra.

PRICE £7 7 6 NET CASH or £1 0 0 deposit and 12 monthly payments of 12/2

SPECIFICATION

WHEELS	28in. x 1½in.	GEAR	71in. free wheel.
PEDALS	3¼in. rubber.	FITTINGS	Tools, toolbag and inflator complete.
FRAMES	22in., 24in., 26in.	FINISH	Black enamel, artistically lined.
SADDLE	Three-coil springs, enamelled.		
TYRES	Warwick. 28 x 1½in.		

All Black finish without extra charge.
Sturmey-Archer 3-Speed Gear with T.T. Control, 21/- extra.
Tricoaster with T.T. Control and front rim brake only, 27/- extra.
H.B. Control, 2/- extra

Gent's Popular Raleigh is also supplied as a Light Roadster at the same price, see p. 10

PRICE £6 17 6 NET CASH or £1 0 0 deposit and 12 monthly payments of 11/3

RALEIGH
THE ALL-STEEL BICYCLE



**POPULAR
LIGHT
ROADSTER**

SPECIFICATION

WHEELS	26in. x 1 1/2in.	GEAR	75in. free wheel.
PEDALS	3 1/2in. rubber or rat trap.	HANDLE BARS	North Road up-turned.
FRAME	22in., 24in., 26in.	FITTINGS	Tools, toolbag and inflater complete.
SADDLE	Four wire enamelled springs.	FINISH	Black enamel with green lining.
TYRES	Warwick. 26 x 1 1/2in.		

All-black finish without extra charge.
Sturmev-Archer 3-Speed Gear with T.T. Control, 21/- extra.
Tricoaster with T.T. control and front rim brake only, 27/- extra.
H.B. Control, 2/-extra.

PRICE £6 17 6 NET CASH or £1 0 0 deposit and 12 monthly payments of 11/3

RALEIGH
THE ALL-STEEL BICYCLE



**"NORTH-ROAD"
ROAD RACER**

SPECIFICATION

WHEELS	26in. x 1 1/2in.	GEAR	Double Cog, forward release.
TYRES	Constrictor or Dunlop racing on hollow steel rims. 26 x 1 1/2in.	PEDALS	85in. and 75in. fixed.
FRAME	22in. and 24in.	HANDLE BARS	3 1/2in. rat trap.
CHAIN	Hans Renold or Coventry Elite.	BAR	Marsh pattern on 3in. extension, or to order.
SADDLE	Brooks' B17.	BRAKE	Calliper front.
		FINISH	Cambridge grey with head tube in red check

Mudguard clearance to order.
Sturmev-Archer 3-Speed Gear with T.T. Control, 21/- extra.
Tricoaster with T.T. Control and front rim brake only, 27/- extra.
H.B. Control, 2/- extra.

PRICE £8 12 6 NET CASH or £1 0 0 deposit and 12 monthly payments of 14/6

RALEIGH
THE ALL-STEEL BICYCLE



**POPULAR
ROAD RACER
NO. 2**



SPECIFICATION

TYRES	26in. x 1 $\frac{1}{2}$ in. Clipper speed	FINISH	Plain black. No lines Black rim centres with red lines.
HANDLE BAR	As illustrated.	GEAR	Fixed.
SADDLE	L.5 enamelled.	BRAKE	Short pull-up front brake (optional coaster hub without rim brake).*
TOP TUBE	Sloping.		

No Mudguards, but mudguard clearance.
Like every other genuine Raleigh bicycle it is guaranteed for ever.
3in. extension to handle-bar, 10/- extra.

PRICE £6 7 6 NET CASH or **£1 0 0** deposit and 12 monthly payments of **10/4**

RALEIGH
THE ALL-STEEL BICYCLE

BOY'S

JUNIOR RALEIGHS



GIRL'S



SPECIFICATION

WHEELS	26in. x 1 $\frac{1}{2}$ in.	GEAR	58in. free wheel
PEDALS	3 $\frac{1}{2}$ in. rubber	SADDLE	Light roadster, enamelled.
FRAMES	18in. and 20in.	FITTINGS	Tools, toolbag and inflator complete.
CRANKS	5 $\frac{1}{2}$ in.		
FINISH	Black enamelled		
TYRES	Juvenile. 26 x 1 $\frac{1}{2}$ in.		

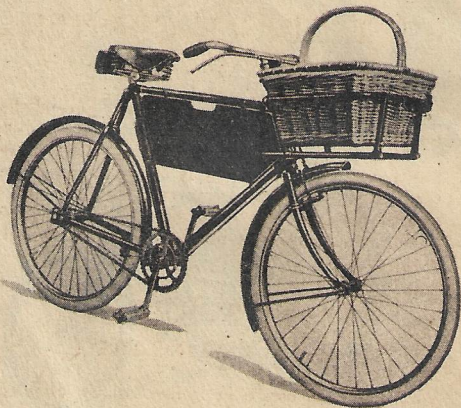
Sturmey-Archer 3-Speed Gear with T.T. Control, 21/- extra.
Tricoaster with T.T. Control and front rim brake only, 27/- extra.
H.B. Control, 2/- extra.
Gearcase to girl's model, 10/- extra.

PRICE £6 15 0 NET CASH or **£1 0 0** deposit and 12 monthly payments of **11/-**

RALEIGH
THE ALL-STEEL BICYCLE



TRADESMAN'S CARRIER



SPECIFICATION

WHEELS 26in. x 1 1/2 in.
 TYRES Clipper Carrier. 26 x
 PEDALS 3 1/2 in. rubber. 1 1/2 in.
 FRAME 22 in. and 24 in.
 NAME PLATE As illustrated.
 GEAR 66 in. free wheel.
 FORK Specially strengthened

CARRIER Tubular, built to frame
 SADDLE Three-coil spring
 enamelled.
 FITTINGS Tools, toolbag and
 inflator complete.
 FINISH Plain black, "All-
 weather" finish.

Complete with basket as illustrated.

With Sturmev-Archer coaster hub and front rim brake only, 3/6 extra

PRICE £9 10 0 NET CASH or £1 0 0 deposit
 and 12 monthly payments of 16/-

**STURMEY-ARCHER
GEARS**

**THE SINGLE COASTER
MAKES CYCLING SAFE**

A NEW coaster hub that possesses several distinctive features. The hub is particularly neat in appearance. It is the lightest coaster hub yet produced, being fully half a pound lighter than some well-known makes. If fitted to a machine in place of the ordinary stirrup pattern brake, it actually adds nothing to the net weight of the cycle.

**THE 3-SPEED
MAKES CYCLING EASY**

The rider who uses a cycle for business finds the Sturmev-Archer 3-speed gear saves time, exertion and money.

The rider who cycles for pleasure finds an added interest in riding and is able to cover long distances with less fatigue.

It is light in weight, beautifully simple in construction, yet has tremendous strength and durability. No machine is complete without a

STURMEY-ARCHER 3-SPEED GEAR

EXPRESSIONS OF APPRECIATION

Dear Sirs,
In 1900, I bought a Raleigh at a bicycle dealer's at Bloemendaal, who got it from your Amsterdam agent, and after a quarter of a century I am still riding it. I rode in the past twenty-five years two-and-a-half times the world's circumference. I can't omit to express to you my great admiration for the excellent material and workmanship of the machines made in your factories.
Van Slingelandstraat 50,
The Hague, Holland.

March, 15, 1925.
I am, Dear Sirs,
Yours faithfully,
C. P. VOUTE

Dear Sirs,
I feel I must record my great appreciation of the value for money of your cycles—value in every sense of the word. In April, 1922, I bought a Raleigh Special, three-speed, all-weather model, and since then have not spent a penny on it for ordinary wear and tear. I have cycled 4,000 miles without a puncture or any of the bearings going wrong in any way. I always recommend the Raleigh to all my friends.
1 New Street,
Shefford, Beds.

September 25, 1924.
I value for money
In April, 1922, I
three-speed, all-weather model,
ordinary wear and tear. I
any of the bearings going
I always recommend the Raleigh to all my
Yours faithfully,
ERNEST STEVENS

Dear Sirs,
It may interest you to know that my machine, purchased ten years ago, has now covered 40,000 miles, and is still going strong. The cycle is running as smoothly now as when new.

February 23, 1925
Yours truly,
W. D. P.

Lewisham, S.E.13.

The Raleigh Cycle Co.,
Gentlemen,

I have just completed a tour of 1,468 miles in thirteen days to "John o' Groats" and back. The machine I bought second-hand two years ago. My friend was riding a well-known light-weight, just three months old, and the trouble he had with his machine made him train back from Inverness. The behaviour of my old machine surprised him. I have been riding all weathers now for seven years, and have had one or two machines in that time, but I can truthfully say that the old Raleigh takes a rare lot of beating, and I hope I shall never have occasion to change my mount.

194 Hillingdon Street,
London, S.E. 17.

September 3, 1924
Believe me,
Yours truly,
JACK HOUGH

TERMS OF BUSINESS

ORDERING, ETC. All communications, orders and cheques should be directed or made payable to the Raleigh Cycle Co., Ltd., and not to individuals. Customers are earnestly requested to adhere to standard patterns, as any deviation causes delay.

CRATES AND CASES. Crates and cases are charged at cost price.

RAILWAY TRANSIT. In view of the action of the railway companies in declining to accept any responsibility, or pay any compensation in case of damage to goods conveyed at "owner's risk," we consign all goods at "COMPANY'S RISK" unless instructions to the contrary are received with order. When forwarded by passenger train, any damage or shortage must be at once reported to us. The railway companies decline liability unless a claim for shortage or damage is reported to them within three days of the receipt of the article or goods, so that all particulars should be reported to us and the railway company on the same day as receipt, without fail. In the event of non-delivery within eight days, please advise us at once, otherwise we cannot accept any responsibility for total loss in transit.

REPAIRS AND SUNDRIES. Repairs and sundries cannot be booked, our terms being net cash on receipt of invoice. Before forwarding machines it is advisable to remove all easily detached fittings as they often disappear in transit. The customer's name and address should also be clearly written on a label attached to the machine. When ordering sundries or parts, customers are requested to send, if possible an exact pattern: failing this, a rough sketch, but in any case the machine number, which will be found stamped on the seat tube just below the saddle bolt, must be quoted.

NOTE. Only genuine Raleigh spare parts should be used for repairs and replacements.

CONDITIONS OF SALE. All goods are sold on the condition that they must not be exhibited at any exhibition in the British Isles without our written consent.

AGENTS. The term "Agent" is used in a complimentary sense only, and those firms whom we style our agents are not authorised to advertise, incur any debts, or transact any business whatsoever on our account, other than the sale of goods, which they may purchase from us, nor are they authorised to give any warranty or make any representation on our behalf other than those contained in our guarantee.

GUARANTEE

OUR Guarantee is unique. From the 1st of January, 1907, Raleighs are guaranteed by us against defects of manufacture **WITHOUT ANY TIME LIMIT**: no matter when such defect shows itself, we replace the defective part gratis. This guarantee is subject to the conditions specified below.

CONDITIONS OF GUARANTEE

With all machines and component parts herein specified we give a special guarantee instead of the guarantee implied by statute or otherwise as to the quality or fitness for the purpose of cycling of goods supplied by us, any such implied guarantee being in all cases excluded. In case of machines which have been used for "hiring-out" purposes or in respect of which our trade mark or manufacturing number has been removed, no guarantee of any kind is given or is to be implied.

We guarantee, subject to the conditions mentioned below, that all precautions which are usual and reasonable have been taken by us to secure excellence of materials and workmanship.

This guarantee does not, of course, include tyres,* rims, chains, saddles, variable gears, coaster hubs, etc., in respect of which we give the guarantee furnished by the makers, usually 12 months. And the purchaser shall not be entitled to claim any damage whatever, save replacement of the defective parts. This guarantee does not apply to defects caused by wear and tear, misuse, or neglect.

If a defective part should be found in any of our machines it must be sent to us carriage paid, accompanied by an intimation from the sender that he desires to have it repaired free of charge under our guarantee, and he must also furnish us at the same time with the number of the machine, the name of the agent from whom he purchased, and the date of purchase.

Failing compliance with the above, no notice will be taken of anything which may arrive, but such article will lie here at the risk of the senders, and this guarantee and any implied guarantee shall not be enforceable. We guarantee only new machines which are bought either direct from us, or from one of our duly authorised agents, and under no other conditions.

***TYRE GUARANTEE.** Dunlop tyres are guaranteed for 15 months: Warwick tyres for 13 months from the date of issue by the tyre company. Those failing by reason of bad workmanship or defective material will be replaced or repaired at a charge proportionate to the wear they have given.